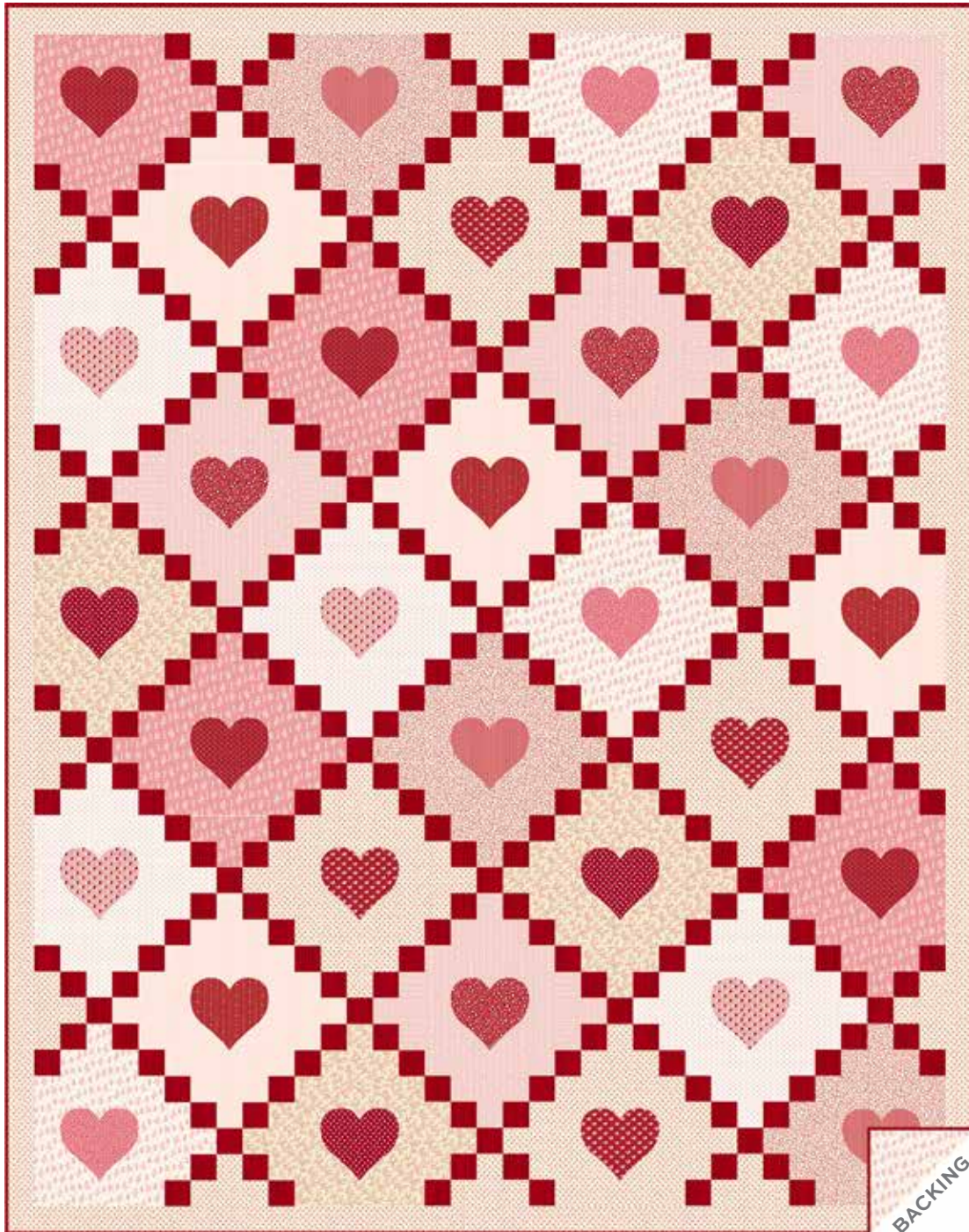


# Be Mine

ANDOVER FABRICS

**a**  
100  
*years*



Tender Hearts Quilt designed by: **Janet Houts** • Quilt Size: **74" x 94"**

Skill Level: **Beginner**

andover • [makower.uk](http://makower.uk)

Free Pattern Download Available

1384 Broadway New York, NY 10018  
Tel. (800) 223-5678 • [andoverfabrics.com](http://andoverfabrics.com)

3/15/22

# Tender Hearts Quilt

Introducing Andover Fabrics new collection: **BE MINE** by Andover Fabrics

Quilt designed by Janet Houts



Quilt finishes 74" x 94"

Block Size: 10" x 10"

*As sweet as candy hearts on Valentine's Day, this double-bed size quilt will display your love for the lucky person who receives it. Attention to fabric placement will result in a design that fools the eye. Where is the block?*

## Cutting Directions

**Note:** Read assembly directions before cutting patches. All measurements are cut sizes and include 1/4" seam allowances. A fat 1/4 is an 18" x 20"-22" cut. Borders are cut the exact lengths required plus 1/4" seam allowances. WOF designates the width of fabric from selvedge to selvedge (approximately 43" wide).

### Fabric A

Cut (279) squares 2 1/2"

### Fabric B

Cut (2) borders 2 1/2" x 90 1/2"

Cut (2) borders 2 1/2" x 74 1/2"

Cut (4) squares 10 1/2"

Cut (29) rectangles 2 1/2" x 6 1/2"

Cut (29) squares 2 1/2"

### 7 Lights From each:

Cut (4) squares 10 1/2"

Cut (12-15) rectangles 2 1/2" x 6 1/2"

(Read Step 2 before cutting.)

Cut (12-15) squares 2 1/2" (Read Step 2 before cutting.)

### 8 Mediums From each:

Cut 4 hearts

### Binding

Cut (9) strips 2 1/2" x WOF for binding

### Backing

Cut (2) panels 40" x 100", pieced to fit quilt top with overlap on all sides

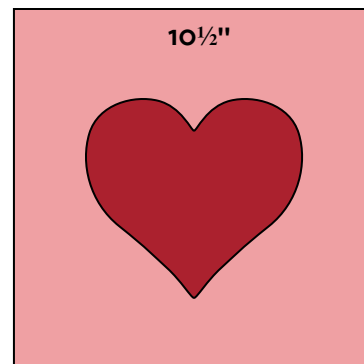
## Fabric Requirements

		Yardage	Fabric
<b>Fabric A</b>	set	1 1/2 yards	398-R
<b>Fabric B</b>	border	1 3/4 yards	401-E
<b>7 Lights</b>	blocks	3/4 yard each	
	395-E	395-L 397-E	398-L
	399-E	400-E 403-R	
<b>8 Med.</b>	hearts	fat 1/4 yard each	
	397-R	398-E 399-R	400-R
	401-R	402-E 402-R	403-E
<b>Binding</b>		3/4 yard	398-R
<b>Backing</b>		5 3/4 yards	395-L

Also needed: Approximately 3 1/2 yards fusible webbing

## Making the Quilt

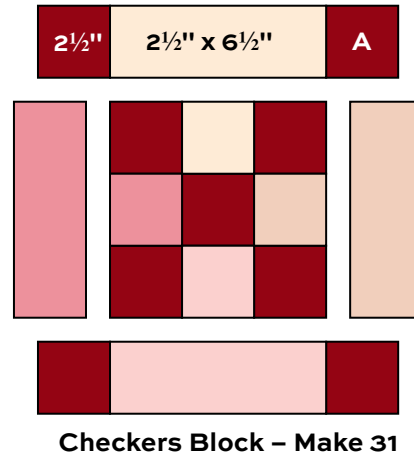
1. The hearts can be applied to the 10 1/2" background squares using fusible webbing. Following manufacturer's directions, press a piece of fusible web cut approximately 15" square to the wrong side of each fat 1/4 print. Make an acrylic or cardboard template of the heart, including the fold lines on the template. Draw around the template to mark 4 hearts on the web's paper backing. Cut out the hearts. Remove the paper backing. Fold each 10 1/2" light square in half both directions and lightly finger press the folds. Centering the heart, fuse it to a background square. Use a machine straight stitch with invisible thread to stitch near the edge of each heart, or use a decorative stitch with matching thread. Make 32 Heart Blocks.



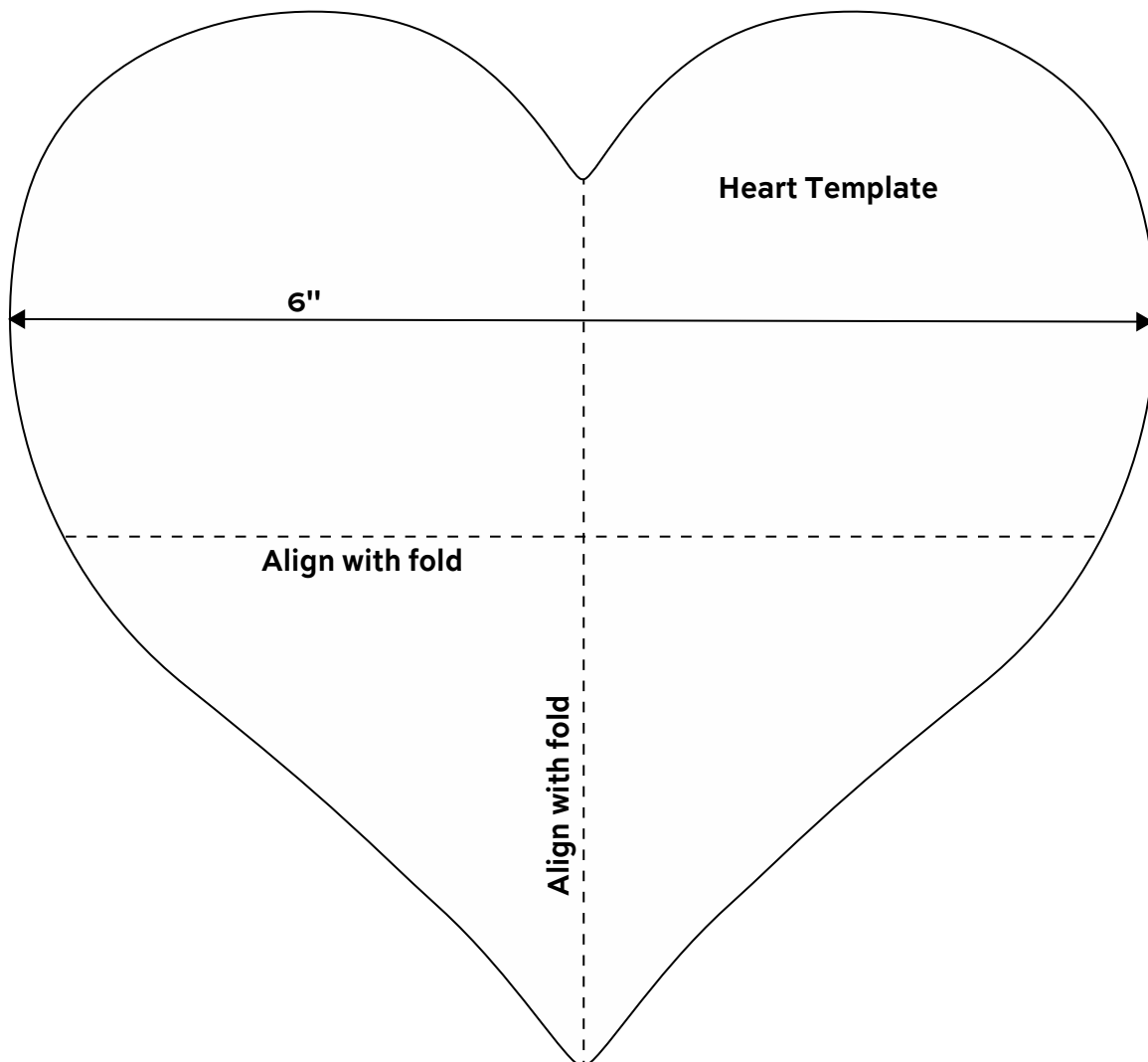
Heart Block – Make 32

# Tender Hearts Quilt

2. Use a design board or flat surface for the next steps to ensure correct fabric placement. Begin by placing 4 Heart Blocks (Row 1) on the design wall, leaving about 13" space in between hearts. Referring to the Quilt Diagram, position 3 more Heart Blocks in Row 2, offsetting them so they are positioned beneath the 13" open spaces in Row 1.
3. Note that each Checkers Block is made with patches from 4 different light prints. These rectangles and squares should match the background prints of the adjacent hearts. Place 9 Fabric A  $2\frac{1}{2}$ " squares in the 13" space between the first 2 hearts in Row 1. Add  $6\frac{1}{2}$ " rectangles and  $2\frac{1}{2}$ " squares of the appropriate light prints as shown. Note that the light print rectangles that touch the outer edges all around the quilt are Fabric B.



4. Repeat Step 3 to position patches for the other Checkers Blocks in Row 1, and the 4 Checkers Blocks in Row 2. Look at the blocks from a distance or through the wrong end of binoculars to check that all the prints are in the correct position. If a fabric is out of place, fix it now. Once you are satisfied that the placement of the light prints is correct, join the squares and rectangles to make the blocks. Join the Heart and Checkers Blocks to make Row 1 and Row 2. Join the rows. Place the rows back on the design wall.

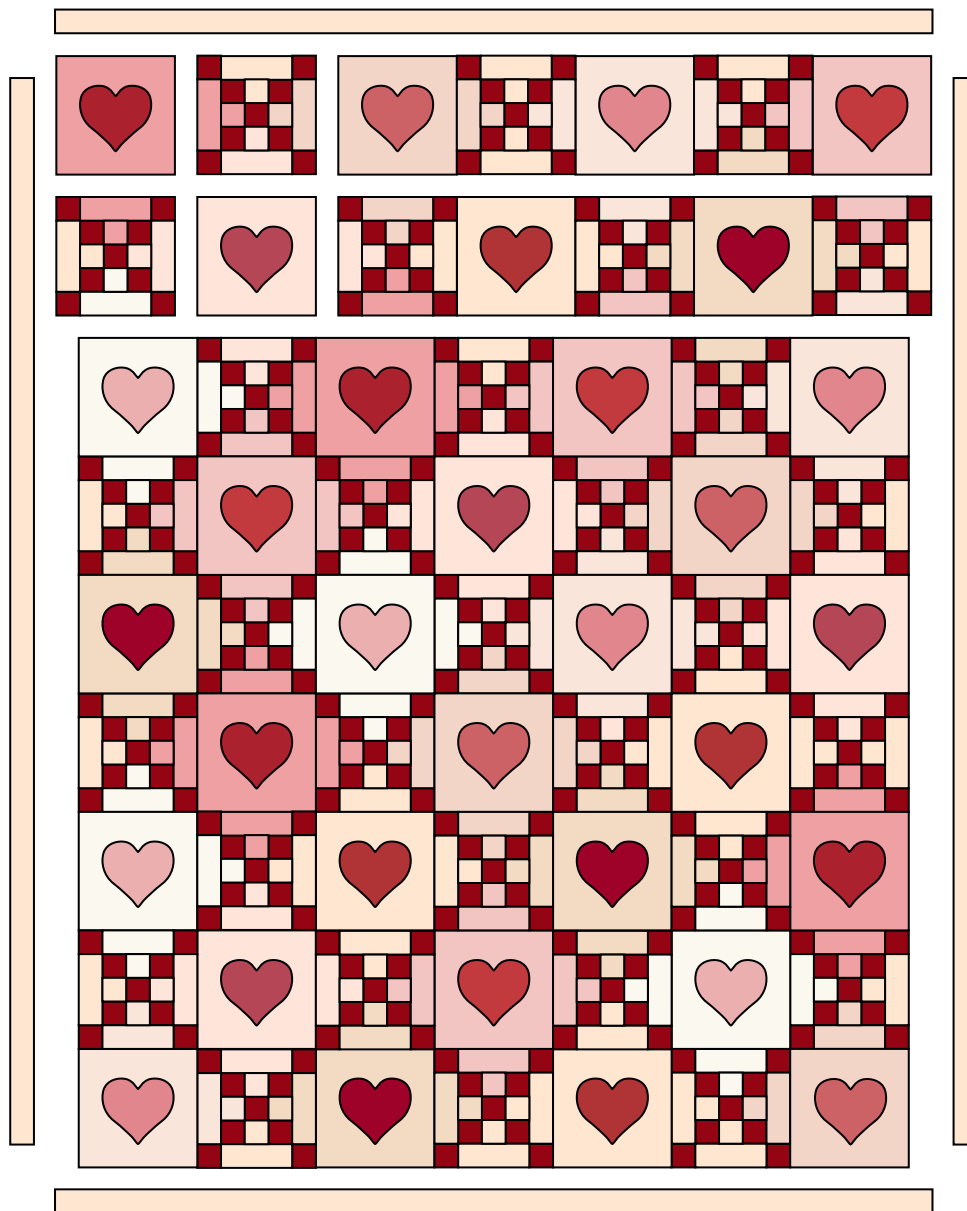


# Tender Hearts Quilt

- In the same manner, arrange Heart Blocks and patches for Checkers Blocks to make Row 3, paying attention to the placement of the light print rectangles and squares for the Checkers Blocks. Join the patches to make the Checkers Blocks, and then join Heart and Checkers Blocks to make Row 3. Place Row 3 on the design wall and check that the prints are correctly placed. You can join this row to the first 2 rows, or join rows once they are all stitched.
- Continue to make each row, replace it on the design wall, and check for mistakes. Again, note that the rectangles in the Checkers Blocks at the ends of even-numbered rows are all Fabric B. Fabric B patches are also used in the bottom 3 Checkers Blocks where they touch the outer edge of the quilt. Once you are sure that the prints form the overall design as shown, join the rows.
- Sew long Fabric B borders to the sides. Join short Fabric B borders to the top and bottom.

## Finishing the Quilt

- Layer the quilt with batting and backing and baste. Quilt in the ditch around borders and patches. Quilt around the heart applique as you wish. Bind to finish the quilt.



Quilt Diagram

# Be Mine

ANDOVER FABRICS

  
100  
years



395-E\*



395-K



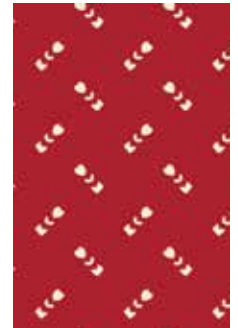
395-L\*



397-E\*



397-K



397-R\*



398-E\*



398-L\*



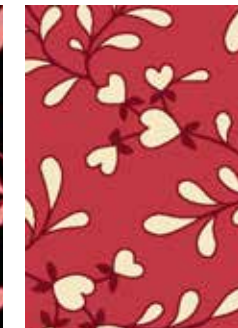
398-R\*



399-E\*



399-K



399-R\*



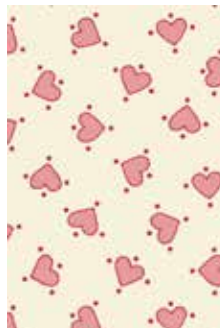
400-E\*



400-K



400-R\*



401-E\*



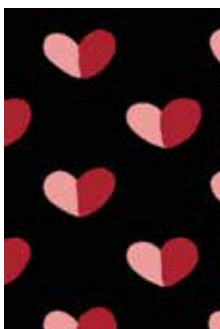
401-K



401-R\*



402-E\*



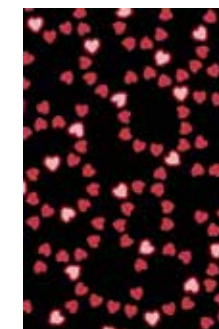
402-K



402-R\*



403-E\*



403-K



403-R\*

\*Indicates fabrics used in quilt pattern. Fabrics shown are 100% of actual size.

andover : makower uk

Free Pattern Download Available

1384 Broadway New York, NY 10018  
Tel. (800) 223-5678 • andoverfabrics.com

3/15/22